



RIVER PASSAGE SERIES - NOTICE OF RACE

A handicap Sailing Series conducted from September to May generally on the first Saturday of the month.

1. RULES

- 1.1. The Organising Authority for the Series is the Hawkesbury River Yacht Club Inc.
- 1.2. The Organising Authority for Race 5 of the Series is the Royal Motor Yacht Club. Race 5 is conducted as per the Notice of Race and Sailing Instructions for the Broken Bay Interclub Challenge as published by the Royal Motor Yacht Club, Newport NSW.
- 1.3. All racing will be governed by the Racing Rules of Sailing as published by the ISAF and the Prescriptions and Special Regulations of Yachting Australia 20013–2016 as modified by HRYC Sailing Instructions and this Notice of Race and as modified by RMYC Sailing Instructions for BBIC Three Islands Race.
- 1.4. Racing is subject to NSW Maritime Regulations and the HRYC Aquatic License Issued by NSW RMS.

2. ELIGIBILITY AND ENTRY

- 2.1. The series is open to all yachts (both mono-hulls and multi-hulls) registered for racing with the HRYC during the 2016-17 Season holding current Category 7 Safety Equipment Certificates.
- 2.2. Skippers and regular crew must be members of Yachting NSW.
- 2.3. Yachts are automatically entered for the series upon payment of 2016-7 Racing Fees.
- 2.4. A Condition of Entry is that each competing boat provide a skippers and supporting crew member for the HRYC Start Boat for at least one race during the series.
- 2.5. Late entries are accepted.

3. CASUAL ENTRY

- 3.1. A Yacht that is not registered with HRYC for racing may compete as a Casual Entry.
- 3.2. Casual entries are not eligible for trophies and prizes.
- 3.3. The casual race entry fee is \$30 per race.
- 3.4. The elapsed and corrected times of a casual race entry will be published in HRYC race results. A casual entry will not be allocated any place in HRYC race results.
- 3.5. Casual Entry is by email communication with the Rear Commodore. Entries are accepted at the discretion of the RC. Handicaps may not be allocated to casual entries received less than 2 days before the race start.



4. SCHEDULE OF RACES

4.1. The River Passage Series comprises 10 races set out below.

	Date	Start Time
Race 1	Saturday, September 3	1230 hrs
Race 2 - Lion Island Race	Saturday, October 1	1230 hrs
Race 3 – Hallets Beach - Morning Race	Saturday, November 5	1100 hrs
Race 4 - Hallets Beach - Return Race	Saturday, November 5	1500 hrs
Race 5 - BBIC Three Islands Race	Saturday, December 10	1100 hrs
Race 6 - HRYC Three Islands Race	Saturday, February 4	1100 hrs
Race 7 – Hallets Beach - Morning Race	Saturday, March 4	1100 hrs
Race 8 - Hallets Beach - Return Race	Saturday, March 4	1500 hrs
Race 9	Saturday, April 1	1230 hrs
Race 10	Saturday, May 6	1230 hrs

5. START TIME

5.1. The start times listed in 4.1 are approximate only and may be varied by the Race Officer.

6. COURSES

6.1. The series features a wide variety of race formats around islands, permanent and laid marks. Attachment 2 provides details on the courses, starting areas, the order in which marks are to be passed, and the side on which each mark is to be left.
The main features of each race are summarized in the table below.



Race	Start Type	Features	Finish	Length
#1, #2, #8, & #9 Standard River Passage Races	Gate Start at various start areas	First Leg to Windward Mix of Permanent and Laid Marks as Marks of the Course. Race 2 Includes Lion Island as a Mark of the Course	At Channel Marker 409 in Hawkesbury River	10.5 - 6 NM
#3 & #7 Hallet Beach Morning Races	Staggered Start at Channel Marker 409	Short Morning Race to Venue for Social Raft Up and Lunch at Hallets Beach in Cowan Creek	At Channel Marker 621 opposite Hallet's Beach Cowan Creek	6 NM
#4 & #8 Hallet Beach Return Races	Conventional Start Line off CM 621 in Cowan Creek – with Competing Duty Boat as Start Mark.	Short Afternoon Race back to Hawkesbury River after lunch in Cowan Creek. Various course options use Permanent East, West and North Marks	At Channel Marker 409 in Hawkesbury River	6NM
#5 BBIC Three Islands Race	Conventional Start Line off Palm Beach - RMYC Start Boat Officiating	Major Race in BBIC Series – Largish fleet around 30 Boats from GSC ASC PBYC RMYC HRYC. Rounds Lion Scotland and Dangar Islands. Boats can round Dangar Island in either direction	RMYC Race Tower, Newport	21 NM
#6 HRYC Three Islands Race	Conventional Start Line off Juno Point – Competing Duty Boat as Starter	Major Race in HRYC Calendar Rounds Lion Scotland and Dangar Islands	At Channel Marker 409 in Hawkesbury River	23 NM



7. START LINE

- 7.1. The location of the Start Areas used for different courses are set out in the Table x and and Diagram x
- 7.2. **Races 1, 2 (Lion Island Race), 9 & 10. These races** commence with a Gate Start as described in the Sailing Instructions. The Start Line is the “Starting Gate” defined as the imaginary line between the Start Mark (either a laid Orange Drum Mark or a Permanent Mark) and the transom of the “Gate Boat” on Port Tack. The Gate remains open until the Gate Boat tacks onto Starboard Tack. Competitors arriving at the Start Area after the Gate has closed must round the starting mark with a complete 360 Degree turn, leaving the Start Mark to Port.

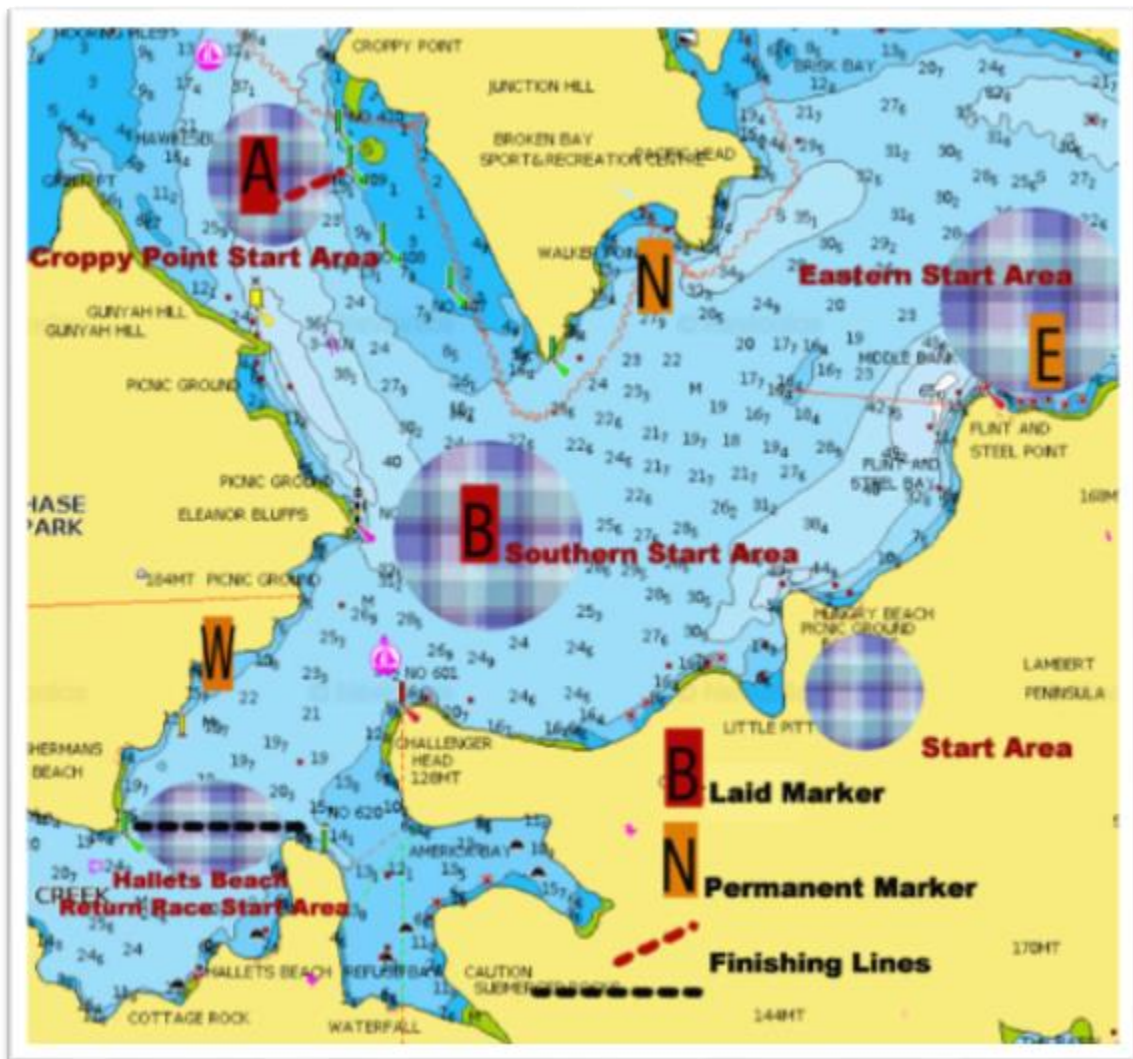
Table & Map below describes Start Areas for different wind directions and Course Numbers in Races 1, 9 & 10.

Table x & Map x below describe Start Areas in Race 2 (Lion Island Race).

- 7.3. **Races 3 & 7** use a Staggered Start as described in the Sailing Instructions. The Start Area is in the vicinity of Channel Marker 409 near Croppy Point. The Starting Marks are a laid Orange Drum Mark and Channel Marker 409. The “Scratch Boat” will be anchored in the vicinity of the Starting Line and will manage all starting signals. Starting times for individual entrants will be published on the HRYC web site at least 3 working days before the Start. See Diagram x below
- 7.4. **Races 4 and 8: The start for Races 4 & 8 will take place after the fleet has rafted up for a social lunch off Hallets Beach. The Start Area will be in the vicinity of the HRYC’s Permanent Cowan Creek Mark. The Start Marks will be the Permanent West Mark and a laid Orange Self Inflating Mark. See Diagram x below.**
- 7.5. **Race 5:** The Start of **Race 5** will be conducted as per the Sailing Instructions and Notice of Race for the BBIC Series issued by the RMYC. This start is generally off Palm Beach between the RMYC Committee Boat and a laid Inflatable Orange or Yellow Mark.
- 7.6. **Race 6 HRYC THREE ISLANDS RACE:** In the event of an Easterly or North Easterly at the start of **Race 6**, the race will start with a Gate Start, with the Start Mark being an Orange Drum Marker laid due South of Juno Point. If the wind is from any direction other than East or North East, the start will be conducted by a competing boat as the designated Start Boat. The Start Boat will be anchored on station in the vicinity of a laid orange Drum Marker. The designated Start Boat may start at any time after the start signal and will have 90 seconds deducted from her elapsed time calculated from the original starting signal. See Diagram x below



Start Area	Wind	Course Type & [Course Number]
Croppy Point Area West of Channel Marker 409	S/SE	SO1; SO2; SO3 (Lion Island)
Southern South of Juno Point and Vicinity of the Mouths of Hawkesbury River & Cowan Creek	N/NE/ NW	NE1; NE2; NE3 (Lion Island) N1; N2; N3 (Lion Island)
Eastern North of Commodore Heights/Flint & Steel	W	WE1; WE2; WE3 (Lion Island Race)





8. FINISH LINE

- 8.1. **Races 1, 2, 3, 4, 6 (HRyc Three Islands Race), 8, 9 and 10** finish between Channel Marker 409 and a laid Orange Drum Marker.
- 8.2. **Race 5** (BBIC Three Islands Race). The finish will be as per RMYC Sailing Instructions and Notice of Race. Generally, the finish is between RMYC Newport Race Tower and a laid yellow marker.
- 8.3. The first boat to finish (excepting BBIC Three Islands Race) will take her own finish time and then remain on station in the vicinity of the finish line taking the finish times of all other boats.

9. TIME LIMIT

- 9.1. The time limit for Races 1, 2, 6, 9 & 10 is 4.5 Hours
- 9.2. The time limit for Races 3,4,7 and 8 (Halletts Beach Races) is 3 Hours.
- 9.3. The time limit for the BBIC Three Islands Race will be specified in the Sailing Instructions issued by RMYC Newport.

10. COURSE SHORTENING

- 10.1. Courses shall be shortened at the sole discretion of the Race Officer and according to the RRS 32.
- 10.2. A decision to shorten the course will be communicated via VHF Radio and mobile phone by the Race Officer. Code Flag S will be displayed on backstay of the Race Officer's Boat.
- 10.3. All Competitors will record times of passing the red pole marker off Palm Beach (both entering and leaving Pittwater); passing through the start line at Juno Point; and, passing the public wharf on the Northern shore of Dangar Island.
- 10.4. If, after 3.5 hours of racing, no competitor has passed Channel Marker 409 **and** the race has not been already shortened, the finish will be between Channel Marker 409 and a laid Orange Drum Marker as competitors sail towards Dangar Island for the first time ie there will be no rounding of Dangar Island.
- 10.5. The Race Officer may decide to "shorten the race retrospectively" for the purposes of obtaining a fair result. In such circumstances, times competitors recorded time of passing course marks will be used to determine elapsed times. This changes RRS Rule 32.

11. SCORING

- 11.1. Scoring will be in accordance with Low Point System set out in RRS Appendix A4 except that a boat that came to the starting area but did not *start* (DNS) shall be scored points for the finishing place two more than the number of boats that came to the starting area. This amends RRS Appendix A4. This amendment provides a real sanction against retiring without logging off.
- 11.2. 1 race is required to be completed to constitute a series.
- 11.3. The number of races to count towards the series score will be determined as follows:
 - When fewer than 4 races have been completed, a boat's series score will be the total of her race scores
 - When from 4 to 5 races have been completed, a boat's series score will be the total of her race scores excluding her worst score.
 - When from 6 to 7 races have been completed, a boat's series score will be the total of her race scores excluding her 2 worst scores.
 - When 8 or more races have been completed, a boat's series score will be the total of her race scores excluding her three worst scores.



- 11.4. A Boat that does not compete and provides crew members as part of the official HRYC Duty Roster for the series shall score 2 points (Duty Points – “DP”) for that race.
- 11.5. A Series Entrant that competes in a race and does not have a current Category 7 Safety Equipment Certificate shall be scored as DSQ and shall not have her times recorded in results.

12. RESULTS

- 12.1. Provisional Results will be announced at the Anglers Rest Hotel, Brooklyn at approximately 1800hrs on the day of the race.
- 12.2. Provisional Series Results will be announced at the Anglers Rest Hotel, Brooklyn at approximately 1800hrs on the day of the last race of the series.
- 12.3. Final Results and adjusted handicaps shall be published on the HRYC website within 5 days of the completion of a race. Results will be published for Line Honours, Performance Handicap (PHS), and Class Based Handicap (CBH).

13. TROPHIES

- 13.1. The Windward Series Perpetual Trophy - shall be presented to the series winner on performance handicap. Trophy presentation will be at the 2017 AGM

14. SAILING INSTRUCTIONS

- 14.1. Sailing Instructions shall be posted on the HRYC website on or before the 5th August 2016.
- 14.2. Sailing Instructions and this Notice of Race will be published in the 2016-17 HRYC Sailing Handbook

15. RADIO COMMUNICATION

- 15.1. Except in an emergency, a boat shall neither make radio transmissions while racing nor receive radio communications not available to all boats. This restriction also applies to mobile tele-phones.

16. DISCLAIMER OF LIABILITY

- 16.1. Competitors participate in the regatta entirely at their own risk. See RRS rule 4, Decision to Race. The HRYC will not accept any liability for material damage or personal injury or death sustained in conjunction with or prior to, during, or after the regatta.

17. INSURANCE

- 17.1. Each participating boat shall be insured with valid third-party liability insurance with a minimum cover of \$10 million per event or the equivalent.

18. FURTHER INFORMATION

- 18.1. For further information please email Mark Cole - rearcommodore@hryc.asn.au.