

Season Notice of Race - River Passage Series

RIVER PASSAGE SERIES - NOTICE OF RACE

A Handicap Series conducted monthly generally on the Second Saturday of the month.

1. RULES

- 1.1. The Organizing Authority for the Series is the Hawkesbury River Yacht Club Inc.
- 1.2. The Organizing Authority for BBIC Series is the Royal Motor Yacht Club and are conducted as per the Notice of Race and Sailing Instructions for the Broken Bay Interclub Challenge as published by the Royal Motor Yacht Club, Newport NSW.
- 1.3. All racing will be governed by the Racing Rules of Sailing as published by the ISAF and the Prescriptions and Special Regulations of Australian Sailing as modified by HRYC Sailing Instructions and this Notice of Race and as modified by RMYC Sailing Instructions for BBIC Series
- 1.4. Racing is subject to NSW Maritime Regulations.
- 1.5 Sailing Area: refer to HRYC Sailing Instructions at hryc.asn.au

2. ELIGIBILITY AND ENTRY

- 2.1. The series is open to all yachts (both mono-hulls and multi-hulls) registered for racing with the HRYC during the Season holding current Category 7 Safety Equipment Certificates.
- 2.2. Skippers and regular crew must be members of Australian Sailing - NSW.
- 2.3. Yachts are automatically entered for the series upon payment of Racing Fees.
- 2.4. A Condition of Entry is that each competing boat provide a skippers and/or supporting crew member for the HRYC Duty Roster as required during the series.
- 2.5. Late entries are accepted.

3. CASUAL ENTRY

- 3.1. A Yacht that is not registered with HRYC for racing and has Category 7 Safety Equipment Certificates may compete as a Casual Entry.
- 3.2. Casual entries are not eligible for trophies and prizes.
- 3.3. The casual race entry is by application and payment of a \$30 per race fee.
- 3.4. The elapsed and corrected times of a casual race entry will be published in HRYC race results. A casual entry will not be allocated any place in HRYC race results.
- 3.5. Casual Entry is by email communication with the Rear Commodore. Entries are accepted at the discretion of the RC. Handicaps may not be allocated to casual entries received less than 2 days before the race start.

4. SCHEDULE OF RACES

- 4.1. For the River Passage Series Schedule refer to Current Calendar.

5. START TIME

- 5.1. The start times listed in 4.1 Calendar are approximate only and may be varied by the Race Officer.

6. COURSES

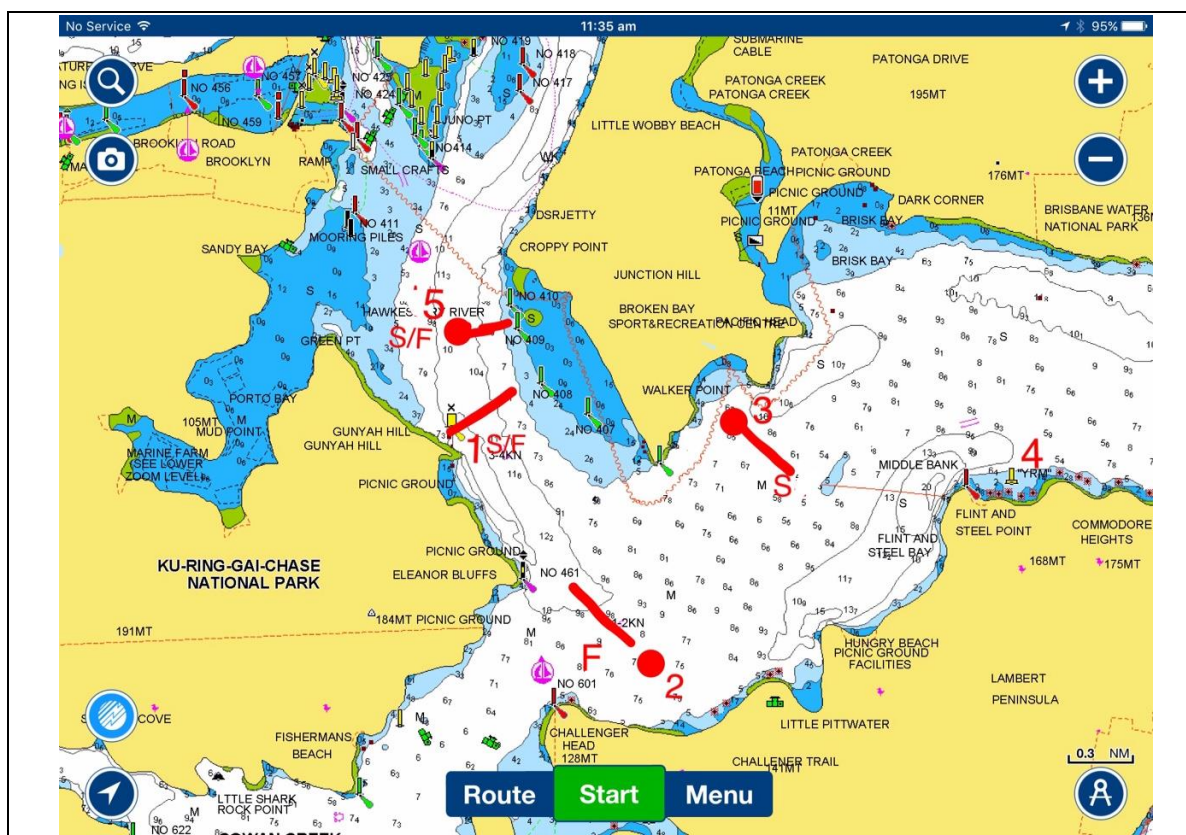
- 6.1. The series features a wide variety of race formats around islands, permanent and laid marks.

7. START LINE

7.1 The start line will be 100m long. It May be between a channel mark and a laid mark or a transit line perpendicular to the nearest shore passing through a mark.. In the case of a transit do not pass between the mark and the shore. Otherwise the Start Line may be determined by the Race Officer of the Day. Otherwise it may be determined by the Race Officer of the Day.

Further information is provided on course sheets.

7.1.a. The location of the Start Areas used for different courses are set out in Tables and Maps below.



1. North or Northwest (Approx. 7 NM)

Start at 1 Gonyah (leaving Gonyah to Port, heading approx. 0 to 6 deg. True),
Start at 1, 5S, 2S, 5S, 2S, Finish between CM409 & LM (5),
Note Marks 2&5 are LM (laid marks). (Start & finish lines are 100m long).

2. Southeast (Approx. 7 NM)

Start between CM 409 & LM 5, (Heading approx. 160 deg. True),
Start at 5, 2P, 5P, 2P, Finish between CM 409 & LM 5
Note Marks 2&5 are LM (laid marks). (Start & finish lines are 100m long).

3. East or Northeast (Approx. 7 NM)

Start Gunyah (1), (leaving Gunyah to Starboard, heading approx. 100 deg. True),
Start at 1, 4P, 3P, 4P, Finish at 1 Gunyah (leaving Gunyah close to Port) (Start & finish lines are 100m long).

4. Southerly or Westerly (Approx 7 NM)

Start at 3 Juno, A transit line from the buoy to southern end of beach. (leaving 3 to starboard, heading approx. 200 Deg. True) Start from the eastern side of the Buoy.
Start at 3, 2P, 3P, 2P, 3P, 2P, 3P, Finish at 2. (leaving 2 close to Port). (Start & finish lines are 100m long). Note Mark 2 is a laid mark.

5. Passage Series Southeast or Southerly

Start between CM 409 & LM 5, (Heading approx. 160 deg. True),
Start at 5, 2P, 3P, 5P, 2P, Finish between CM 409 & LM 5
Note Marks 2&5 are LM (laid marks). (Start & finish lines are 100m long).

6. Passage Series Special NE

Start between CM 409 & LM 5, (Heading approx. 140 deg. True),
Round Mackerel Beach Mark leaving it to Port.
Finish between CM 409 & LM 5
Note Mark 5 is a LM (laid mark). (Start & finish lines are 100m long).

7. Passage Series Lion Is. NE, West

Start between CM 409 & LM 5, (Heading approx. 140 deg. True),
Round Lion Is. leaving it to Starboard.
Finish between CM 409 & LM 5
Note Mark 5 is a LM (laid mark). (Start & finish lines are 100m long).

8. Three Islands Race

Start between CM 409 & LM 5, (Heading approx. 140 deg. True),
Round Lion Is. Leaving it to starboard.
Round Scotland Is. leaving it to port.
Round Dangar Is. leaving it to port.
Finish between CM 409 & LM 5, (Heading approx. 140 deg. True),
Note course may be shortened. See Race notice for details.

8. FINNISHING. The first boat to finish (excepting BBIC Three Islands Race) where possible will take her own finish time and then remain on station in the vicinity of the finish line taking the finish times of all other boats.

8.1 FINISH LINE

8.1.a **The FINISH line will be 100m long. It May be between a channel mark and a laid mark or a transit line perpendicular to the nearest shore passing through the mark. In the case of a transit do not pass between the mark and the shore. Otherwise the finish line may be determined by the Race Officer of the Day.**

Further information is provided on course sheets.

9. TIME LIMIT

9.1. The time limit for Races is 3.5 Hours

9.2. The time limit for the HRYC Three Islands Race will be specified in the Sailing Instructions

9.3. The time limit for the BBIC Three Islands Race will be specified in the Sailing Instructions issued by RMYC Newport.

10. COURSE SHORTENING

10.1. Courses shall be shortened at the sole discretion of the Race Officer and according to RRS 32.

10.2. A decision to shorten the course will be communicated via VHF Radio and/or mobile phone by the Race Officer. Code Flag S will be displayed on backstay of the Race Officer's Boat where possible.

11. SCORING

Points are awarded for competing in Series Races as follows:

(a) A boat that fails to cross the starting line within the time stipulated in the Rules shall be awarded DID NOT START (DNS) status for the race.

(b) A boat that completes the course without being disqualified and crosses the finishing line, whether or not the course has been shortened in accordance with the Rules, shall be considered to have FINISHED and its time for the course used to determine its handicap place for that race.

(c) A boat may be DISQUALIFIED (DSQ) if, in the opinion of the Race Official, it has failed to complete the course in accordance with the Rules.

(d) A boat that starts a race, but fails to finish within the time stipulated in the Rules, shall be awarded DID NOT FINISH (DNF) status for the race.

(e) For boats that FINISHED points shall be awarded as follows:

The number of boats that started the race (Ns) plus 3 minus the boat's position on handicap (Ph). That is $Ns+3-Ph$

Example: If there are 10 boats in a race. First on handicap gets $10+3-1=12$.

Second on handicap gets $10+3-2=11$ and so on. Tenth and last on handicap (if all boats finish) gets $10+3-10=3$.

(f) Boats awarded DNF status shall get points equal to the total number of points that would have been available to those boats had they finished, added together and divided by the number of DNF boats, the result being rounded down to the nearest whole number.

Example: If there are 10 boats in a race and only 6 boats finished the remaining points would be $(6+5+4+3)/4=4$

(g) A race that starts and which no boats finish shall be considered to be ABANDONED.

(h) A race that is terminated for any reason by the Race Official (Rule 8.9.2) shall be considered to be ABANDONED.

(i) Boats that start in a race that is ABANDONED are awarded one point.

(j) Boats awarded DSQ, or DNS, status get zero points.

(k) Where a boat does not sail in a race because the Skipper is carrying out the duties of the Race Official, that boat shall receive points equal to 75% of the winners rounded up or down to the nearest whole number.

DROP 2 SCORE FOR COMMODORE'S TROPHY AND OTHER SERIES

The total points awarded to each boat in the Commodore's Trophy series, after

dropping the lowest two individual race scores (including DNS's & DNF' s), determines the final Commodore's Trophy series positions. This is known as the **DROP 2 SCORE**.

In the event of a series score tie between two or more boats at the end of a series, the relative positions of the tied boats will be determined by comparing the total points for the season for those boats including the lowest race scores that were deleted in determining the drop 2 score.

If a tie remains, the deciding factor will be the points awarded to each of the boats in the last race in which both (or all) of the tied boats competed. If a tie still remains, they will be ranked in order of their total scores at the start of the last race of the series. Any remaining ties shall be broken using the total scores at the next to last race and so on until the tie is broken.

12. RESULTS

12.1. Provisional Results will be announced at Brooklyn at approximately 1800hrs on the day of the race.

12.2. Provisional Series Results will be announced at Brooklyn at approximately 1800hrs on the day of the last race of the series.

12.3. Final Results and adjusted handicaps shall be published on the HRYC website within 5 days of the completion of a race. Results will be published for Line Honours, Performance Handicap (PHS).

13. TROPHIES

13.1. The Windward Series Perpetual Trophy - shall be presented to the series winner on performance handicap. Trophy presentation will be at the 2017 AGM

14. SAILING INSTRUCTIONS

14.1. Sailing Instructions shall be posted on the HRYC website.

14.2. Sailing Instructions and this Notice of Race will be published in the 2016-17 HRYC Website.

15. RADIO COMMUNICATION

15.1. Except in an emergency, a boat shall neither make radio transmissions while racing nor receive radio communications not available to all boats. This restriction also applies to mobile telephones.

16. DISCLAIMER OF LIABILITY

16.1. Competitors participate in the regatta entirely at their own risk. See RRS rule 4, Decision to Race. The HRYC will not accept any liability for material damage or personal injury or death sustained in conjunction with or prior to, during, or after the regatta.

16.1.a. Disclaimer: It is the responsibility of owners and skippers to ensure that each boat nominated on the HRYC Boat Registration and Season Racing Entry Form complies with the current Racing Rules of Sailing.

16.2. By signing the HRYC Boat Registration and Season Entry Form a competitor has made a declaration to the HRYC that the Owner and Skipper of the nominated boat understands and will, at all times while racing, comply with the requirements of Sailing Australia, the Notice of Race and Sailing Instructions, including:

16.2.a. RRS 46

16.2.b. the person in charge of the boat shall take responsibility to ensure that the crew complies with RRS 56

16.2.c. Australian Sailing Special Regulations;

16.2.d. That the boat has adequate current Third Party Property Liability Insurance and Third Party Personal Liability cover of not less than \$10,000,000 (Ten million dollars) for any one incident; and that all insurance shall be maintained during the period of racing;

16.2.e. The HRYC is not responsible for the seaworthiness of a boat whose entry is accepted or the sufficiency or adequacy of its equipment;

16.3. By signing and lodging the Boat Registration and Seasons Entry Form with the HRYC, a person warrants to the HRYC that

16.3.a. he or she will draw to the attention of any person who competes on the Boat in any event conducted by the HRYC of the Risk Warning (Clause 35) below;

16.3.b. he or she acknowledges the receipt of the risk warning below and releases the HRYC from any claim or liability whatsoever for any harm or personal injury suffered by him or her, or by any person claiming through him or her, in any event conducted by the HRYC.

16.3.c. All those taking part in these races do so at their own risk and responsibility. Specific attention is drawn to RRS 4 which states; "The responsibility for a boat's decision to participate in a race or to continue racing is hers alone". The Hawkesbury River Yacht Club Inc., Committee Members, Office Bearers, Race Officers or any other race officials are not responsible for any damage or injury either afloat or ashore prior to, during or after the event.

17. RISK WARNING

Participants are warned that, regardless of the precautions which might be taken by reasonable and experienced persons, sailing can be a dangerous pursuit and participants are exposed to significant risk of property damage, physical harm and possibly death. These risks may include, but are not limited to:

- The extremes of weather and sea conditions.
- The potential that control of vessels may be lost, resulting in collision with objects and other vessels.
- The sudden movement of the vessel at any time and the possibility that participants may fall or be thrown overboard, resulting in drowning.
- The possibility that participants may be injured by equipment on the vessel.
- The absence of immediate medical care and the likelihood that significant delays may occur before medical care is available.
- Exposure to the elements for extended periods.

Hawkesbury River Yacht Club Inc. also warns participants that regardless of their best intentions, they may be unable to render assistance to participants who are in distress. Participants are warned to consider the above risks and all other risks before deciding to participate in any sailing event with Hawkesbury River Yacht Club. Participants are also advised that although Hawkesbury River Yacht Club is covered by third party liability insurance, this cover DOES NOT extend to participants. Any participant who considers they have a need for insurance must make their own private arrangements with an insurer. Membership of a sailing club affiliated with Yachting NSW includes limited personal accident insurance cover.

18. INSURANCE

17.1. Each participating boat shall be insured with valid third-party liability insurance with a minimum cover of \$10 million per event or the equivalent.

19. RIGHTS TO USE NAME AND LIKENESS

19.1. A competitor in any HRYC sailing event automatically grants to the HRYC the right in perpetuity to make, use and show, from time to time and at their discretion, any motion pictures, still pictures and live, digital video or film television and other reproductions of him/her during the period of the Event in which the competitor participates and in all

material related to the said sailing event without compensation.

20. FURTHER INFORMATION

20.1. Further information is available in the HRYC Sailing Instructions
For further information, please email - rearcommodore@hryc.asn.au.
(Season Notice of Race - River Passage Series)

Updated 23rd October 2017